



Exploring In Idaho's Newest Copper District

CSE: ZEUS | OTC: ZUUZF | FRANKFURT: O92

CORPORATE PRESENTATION | MARCH 2025

FORWARD LOOKING STATEMENTS

This corporate presentation and the information contained herein (the "Presentation") is confidential proprietary and for authorized use only.

This Presentation provides general background information about the activities of Zeus Mining. Information disclosed in this Presentation is current as of April 17, 2024, except as otherwise provided herein and Zeus Mining does not undertake or agree to update this Presentation after the date hereof except as may be required by applicable securities laws. All information is derived solely from management of Zeus Mining and otherwise publicly available third-party information which are believed to be reliable, but which have not been independently verified by the Company and as a result are not guaranteed as to accuracy and completeness. No representation or warranty, express or implied, is made or given by or on behalf of Zeus Mining or any of its affiliates, directors, officers or employees as to the accuracy, completeness or fairness of the information or opinions contained in this Presentation and no responsibility or liability is accepted by any person for such information or opinions. No person has been authorized to give any information or make any representations other than those contained in this Presentation and, if given and/or made, such information or representations must not be relied upon as having been so authorized. This Presentation contains "forward-looking information" within the meaning of applicable Canadian securities laws. This information and these statements, referred to herein as "forward looking statements", are made as of the date of this Presentation or as of the date of the effective date of information described in this presentation, as applicable. Forward-looking statements relate to future events or future performance and reflect current estimates, predictions, expectations or beliefs regarding future events and include, without limitation, statements with respect to Zeus Mining: (i) future price of metals, the estimation of mineral resources, the realization of mineral resource estimates, the timing, budget and scope of future exploration activities, capital expenditures, success of exploration activities, permitting timelines, requirements for additional capital, the completion of transactions and future financings and receipt of regulatory approvals. This presentation contains certain information pertaining to historical results. The historical results are not contained in a National Instrument 43-101 technical report and therefore should not be relied upon for assessing the merits of the projects or properties. The historical results and information are provided for context only. Generally, forward-looking information can be identified by the use of forward-looking terminology such as "plans", "expects", or "does not expect", "is expected", "budget", "scheduled", "estimates", "projects", "targets", "forecasts", "intends", "anticipates", or "does not anticipate", or "believes" or variations of such words and phrases or state that certain actions, events or results "likely", "may", "could", "would", "might", or "will be taken", "occur", or "be achieved". Forward-looking information is based on the opinions and estimates of management at the date the information is made, and is based on a number of assumptions and is subject to known and unknown risks, uncertainties and other factors that may cause the actual results, level of activity, performance or achievements of the Company to be materially different from those expressed or implied by such forward looking information, including without limitation: (i) the availability and continuity of financing; (ii) expected vs actual results of current exploration activities; (iii) expected vs actual results of reclamation activities; (iv) future metal prices; (v) risks inherent to the mining industry; (vi) delays in obtaining governmental or regulatory approvals or in the completion of exploration activities, as well as other risk factors that may arise. Although the Company has attempted to identify important factors that could cause actual results to differ materially from those contained in forward-looking information, there may be other factors that cause results not to be as anticipated, estimated or intended. There can be no assurance that such information will prove to be accurate, as actual results and future events could differ materially from those anticipated in such information. Accordingly, readers should not place undue reliance on forward-looking information. Zeus Mining and its directors, officers and employees disclaim any obligation to update any forward-looking statements, whether as a result of new information, future events or results or otherwise, except as required by applicable law. Accordingly, readers should not place undue reliance on forward-looking statements due to the inherent uncertainty therein. All forward-looking information is expressly qualified in its entirety by this cautionary statement. This Presentation is for informational purposes only and does not constitute an offer to sell or the solicitation of an offer to buy securities in any jurisdiction in which such offer, solicitation or sale would be unlawful. The technical content of this presentation has been reviewed and approved by Dean Besserer, P.Geo., who is a Qualified Person as defined by National Instrument 43-101.

EXPLORING IN IDAHO'S NEWEST COPPER DISTRICT

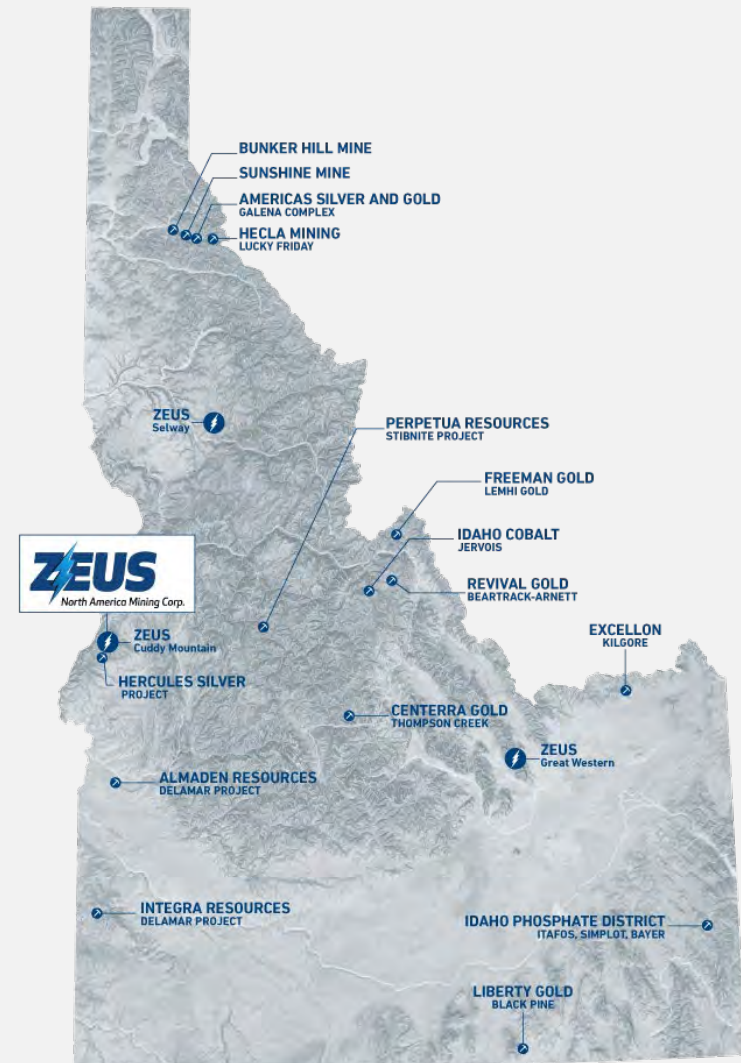
Zeus recently acquired 3 properties in the State of Idaho, USA, with it's **Cuddy Mountain Property being it's flagship Property**. Properties consist of 101 (Cuddy Mountain), 57 (Selway) and 38 (Great Western) lode mining claims respectively covering an area of ~4,200 acres subject to a 2% NSR.

Zeus North America Mining Corp. is positioned to capitalize on two of the most dynamic and promising metals driving the economy today. **Copper and Silver.**

Zeus is positioned to unlock the untapped potential hidden beneath the proven but under-developed silver-rich terrain of Idaho by **tapping into a newly identified copper porphyry system.**

Leveraging cutting-edge exploration technologies, our focus extends beyond silver exploration, **being in the heart of a newly discovered copper porphyry district.**

The macro demand for **silver and copper is driving the future**, and Zeus is well positioned to pioneer prosperity through systematic exploration.



KEY INVESTMENT HIGHLIGHTS – WHY IDAHO?



HISTORY

Idaho has a rich history of mining and strong geology for AU, AG, CU and more.
~\$6B produced in Idaho since 1885.



GEOLOGY

Cuddy Mountain Property shares similar geology and structure as Hercules Metals Leviathan Copper Porphyry Discovery



FUTURE

High grade silver and a porphyry copper system



JURISDICTION/DE-RISKED PROCESS

Fraser Institute names it as a top jurisdiction for mining investment, evaluating factors such as geological potential, favorable mining regulations, taxation, and political support



LOCATION

Cuddy Mountain Property is located directly beside Hercules Metals Hercules Project in Idaho



EXTENSIVE EXPERIENCE

Team with over 3 decades of global exploration and discoveries

IDAHO: A BOOMING MINING HUB



~\$1B
Metals
Produced
Annually

Top Mining
Friendly
State (8th)

Recent
Major Cu
Discovery

Speed Act
in place in
2025

Company	Idaho Project	County	Area (Ha)	Metal	Deposit Model	Status
Hecla Mining	Lucky Friday ¹	Shoshone North Idaho	503	Ag, Pb, Zn	Mesothermal veins from sedex remobilization	UG Operating Mine
Integra Resources	DeLamar ²	Owyhee South-West Idaho	8,100	Au, Ag	Epithermal Disseminated Volcanic Dome Model	FS
Perpetua Resources	Stibnite ³	Valley Central Idaho	10,968	Au, Ag, Sb	Magmatic & Epithermal	FS, Permitting
Americas Silver and Gold	Galena Complex ⁴	Shoshone North Idaho	3,608	Ag, Pb, Zn, Cu	Mesothermal veins from sedex remobilization	UG Operating Mine
Liberty Gold	Black Pine ⁵	Cassia & Oneida	5,088	Au	Carlin Type	PFS
Revival Gold	Beartrack-Arnett Gold Project ⁶	Lemhi	5,800	Au	Mesothermal Orogenic	PEA
Freeman Gold	LEMHI GOLD DEPOSIT ⁷	Lemhi	2,727	Au	Intrusion Related	FS

Investors are cautioned that mineral deposits in the table are not adjacent properties or same deposit types as the Hercules Silver Project, and are not indicative of mineral deposits on the Company's properties.

1 News Release, Hecla Mining Co. , Hecla Reports 2nd Highest Silver Reserves in Company History, February 17, 2022
2 Gustin, M.M., Weiss, S.I., Dyer, T.L., McPartland, J.S., Woods, J.L., Welsh, J.D., 2019, Technical report and preliminary economic assessment for the De Lamar and Florida mountain gold - silver project, Owyhee county, Idaho, Usa
3 Zimmerman, R.K., Ibrado, A. Dunn, G.M., Kirkham, G.D., Martin, C.J., Kowalewski, P.E., Roos, C.J., Rosenthal, S. 2021. Stibnite Gold Project Feasibility Study Technical Report, Valley County, Idaho.
4 Americas Gold and Silver Corporation website link: Reserves20210908.xlsx. Additional note: AGSC also separately reports Galena Mine MRMR for lead and copper.
5 Gustin, M.M., Simmons, G.L., Smith M.T., 2021, Updated technical report and resource estimate for the Black pine gold project, cassia county, Idaho, Usa
6 Revival Gold website (www.revivalgold.com) Hanson, K., Bissonnette B., Baluch, P., Cameron D., Mathisen, M., Rodney, R., 2020 Preliminary Economic Assessment of the Heap Leach Operation on the Beartrack Arnett Gold Project Lemhi County, Idaho, USA, NI 43-101 Technical Report
7 Freeman Gold website (Freemangoldcorp.com). Lemhi Gold Deposit. NI 43-101 Technical Report and Preliminary Ecomic Assessment, Nov.20,2023. Ausenco Engineering Canada ULC.

PIONEERING PROSPERITY

Goldman Sachs says that “Copper is the New Oil” and that “**Copper is on a necessary path to \$15,000/t.**”

Goldman Sachs

Source: <https://www.goldmansachs.com/intelligence/pages/gs-research/copper-is-the-new-oil/report.pdf>.

“Simply put, the road to reaching net zero begins and ends with copper.”

MINING[DOT]COM



600% - 900%
by 2030

Potential increase in copper demand from the green transition

8.2Mt
by 2030

estimated long term copper supply gap (Goldman Sachs)



1.24B
OUNCES

Record silver demand
in 2022

42%

Silver demand increase
since 2020

38%

Expected demand
growth by 2033¹

237.7M
OUNCES

Record demand + lower
production = Global silver
deficit in 2022²

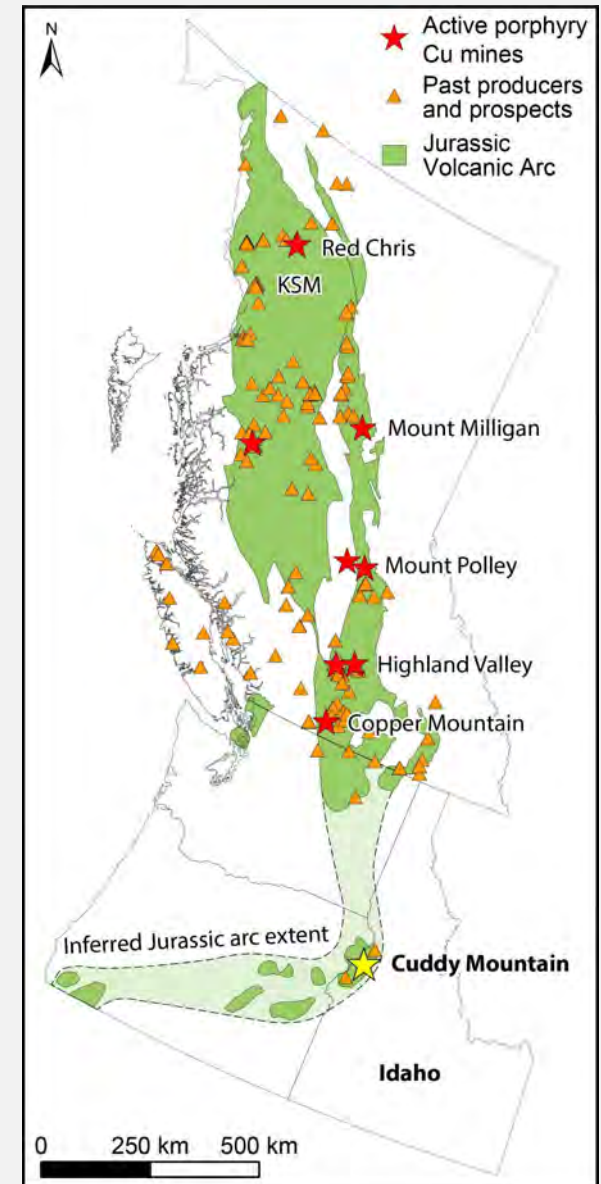
¹ <https://www.kitco.com/news/article/2024-01-02/silver-outlook-2024-constrained-supply-rising-demand-and-usd-weakness-could>

² <https://www.silverinstitute.org/total-global-silver-demand-posts-record-high-1-24-billion-ounces-2022>

³ <https://sprott.com/insights/silvers-clean-energy-future/>

CUDDY MOUNTAIN REGIONAL GEOLOGY

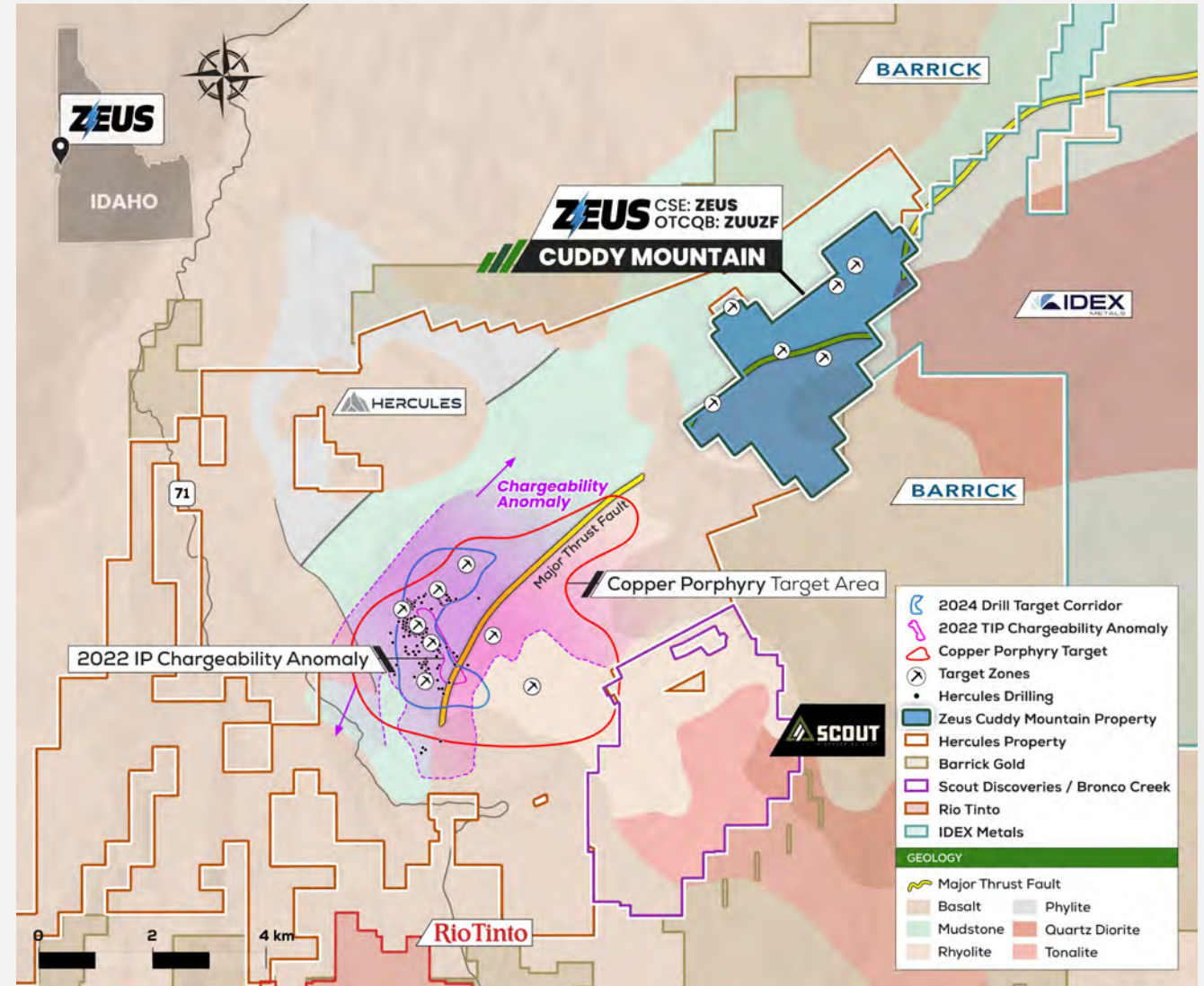
- Opportunity – Discovery of Tier One porphyry Cu (+/-Mo) deposit
- Project is located within southern extension of the porphyry Cu Stikinia/Quesnel terrains.
- Neighboring Scout Discoveries have >10 km² of a younger outcropping porphyry Cu system adjacent to Hercules Leviathan blind porphyry copper discovery.
- Property Geology: The presence of the Seven Devils Volcanics (Andesites) and associated Cu-Mo soil anomaly.



CUDDY MOUNTAIN GEOLOGY

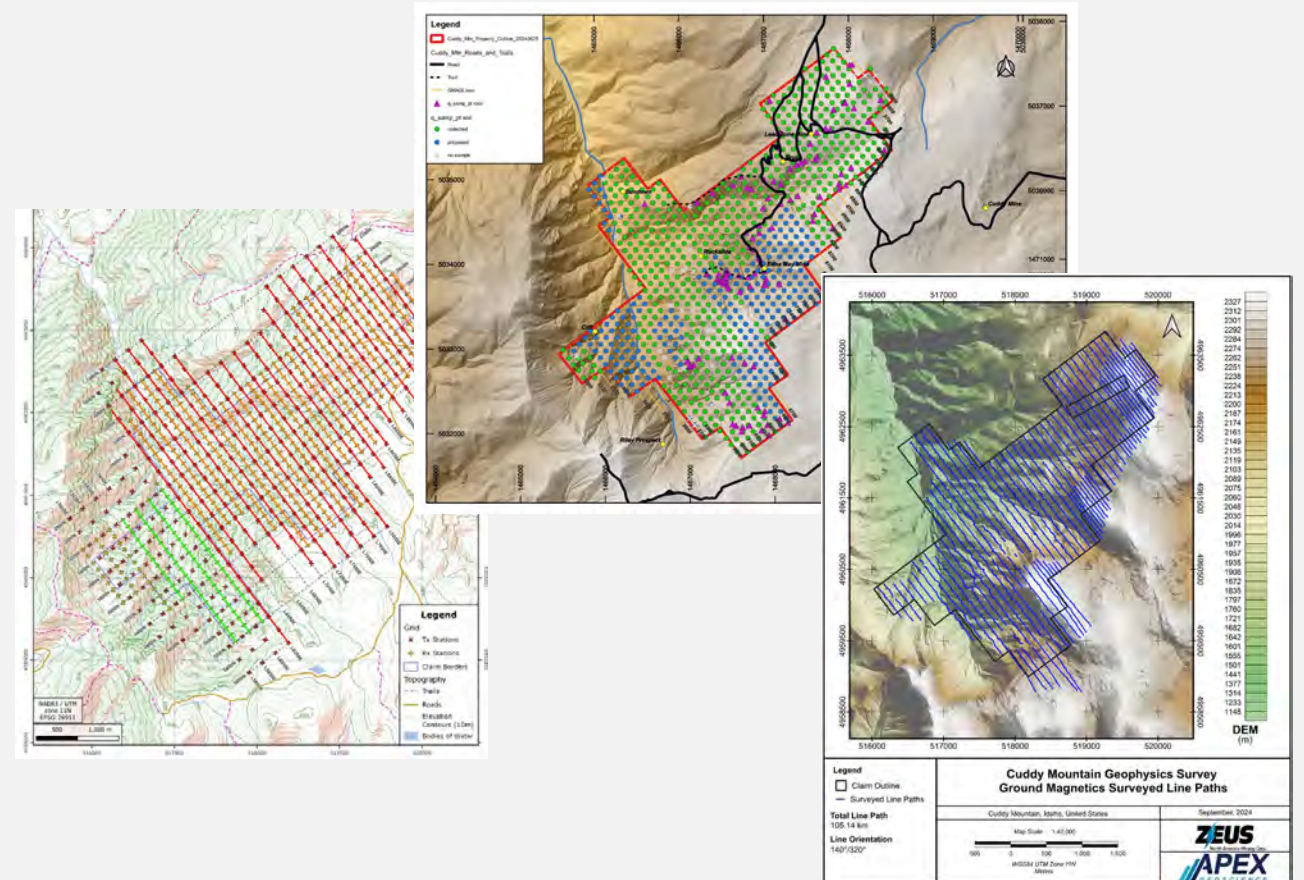
- The Cuddy Mountain Property was **staked before Hercules Metal's porphyry discovery** due to its unique geological features and previous high-grade silver workings.
- The Property now **ring staked** by Hercules Metals and is along the same major thrust fault to the NE.
- Hercules' modern systematic exploration has located the Leviathan Porphyry in the adjacent volcanic rocks underlying the rhyolite to the east.
- Shallow level porphyry style alteration has been mapped using copper-in-soil anomalies in and around historically defined silver mineralization

*Adjacent Property (www.herculesmetals.com)



CUDDY MOUNTAIN 2024 EXPLORATION

- Property Wide Soil Samples (799 Soils)
- Property wide Ground Magnetics-105 Line Km's
- Property wide mapping and rock grab sampling (339 Rock Grab Samples)
- Staking
- Property wide 3D-IP and Resistivity Survey

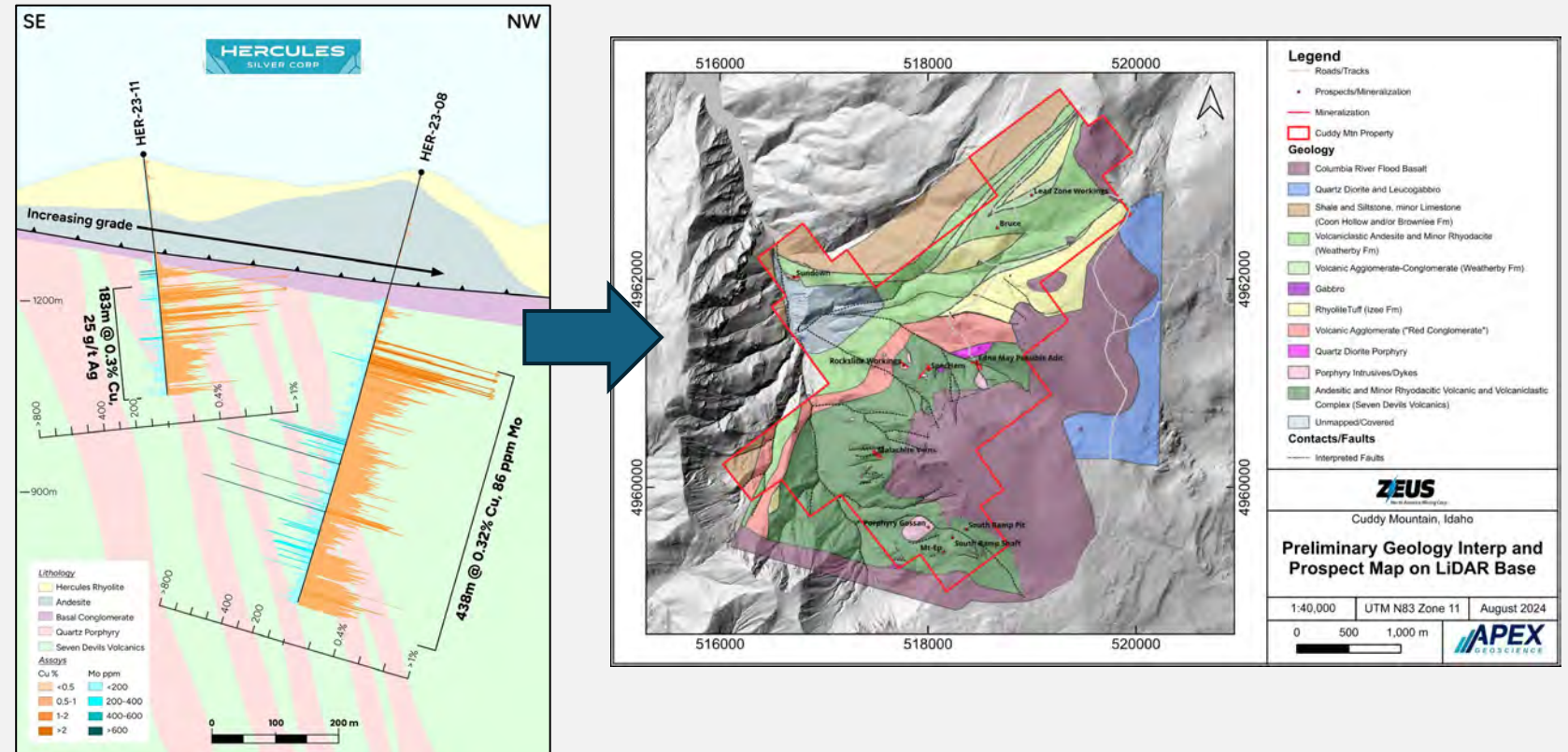


*All information is derived solely from management of Zeus Mining and otherwise publicly available third-party information which are believed to be reliable, but which have not been independently verified by the Company and as a result are not guaranteed as to accuracy and completeness.

CUDDY MOUNTAIN 2024 EXPLORATION-GEOLOGY

Mapping Observations:

- Presence of the upper volcanic sequence (Rhyolite, Andesite and Volcano-clastics) including Silver, lead, Zinc and Copper mineralization.
- Presence of Volcano-clastic units at or near the unconformity (Red Conglomerate as per Hercules).
- Presence of mineralized Quartz Porphyry (Chalcopyrite – bearing) dykes?.
- Presence of the Seven Devils Volcanics (Andesites).
- Presence of Fe-alteration and Qtz-Cpy Veins.



*All information is derived solely from management of Zeus Mining and otherwise publicly available third-party information which are believed to be reliable, but which have not been independently verified by the Company and as a result are not guaranteed as to accuracy and completeness.

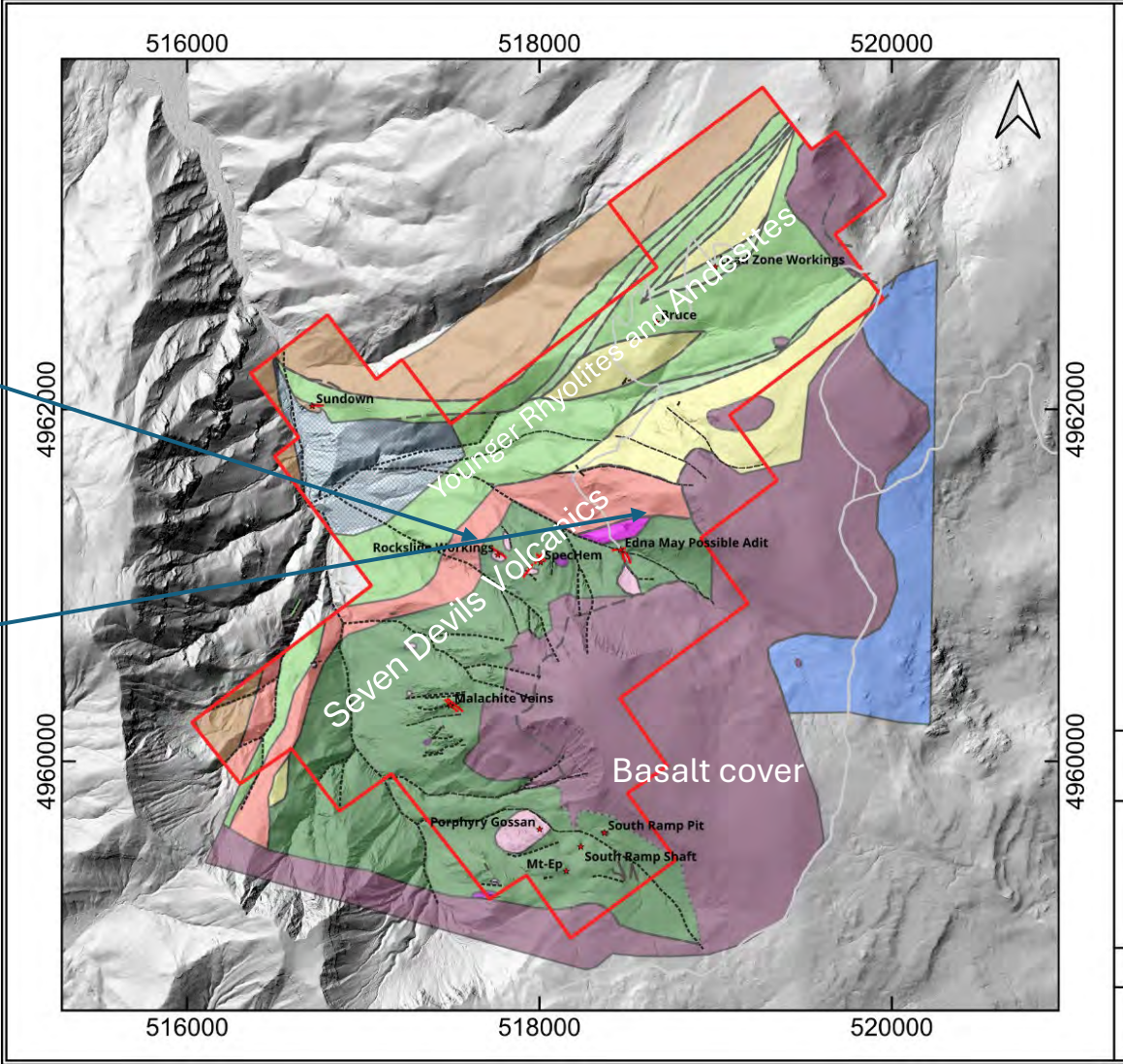
CUDDY MOUNTAIN 2024 EXPLORATION-GEOLOGY



Malachite and Azurite (Cu)
at the Rockslide Showing



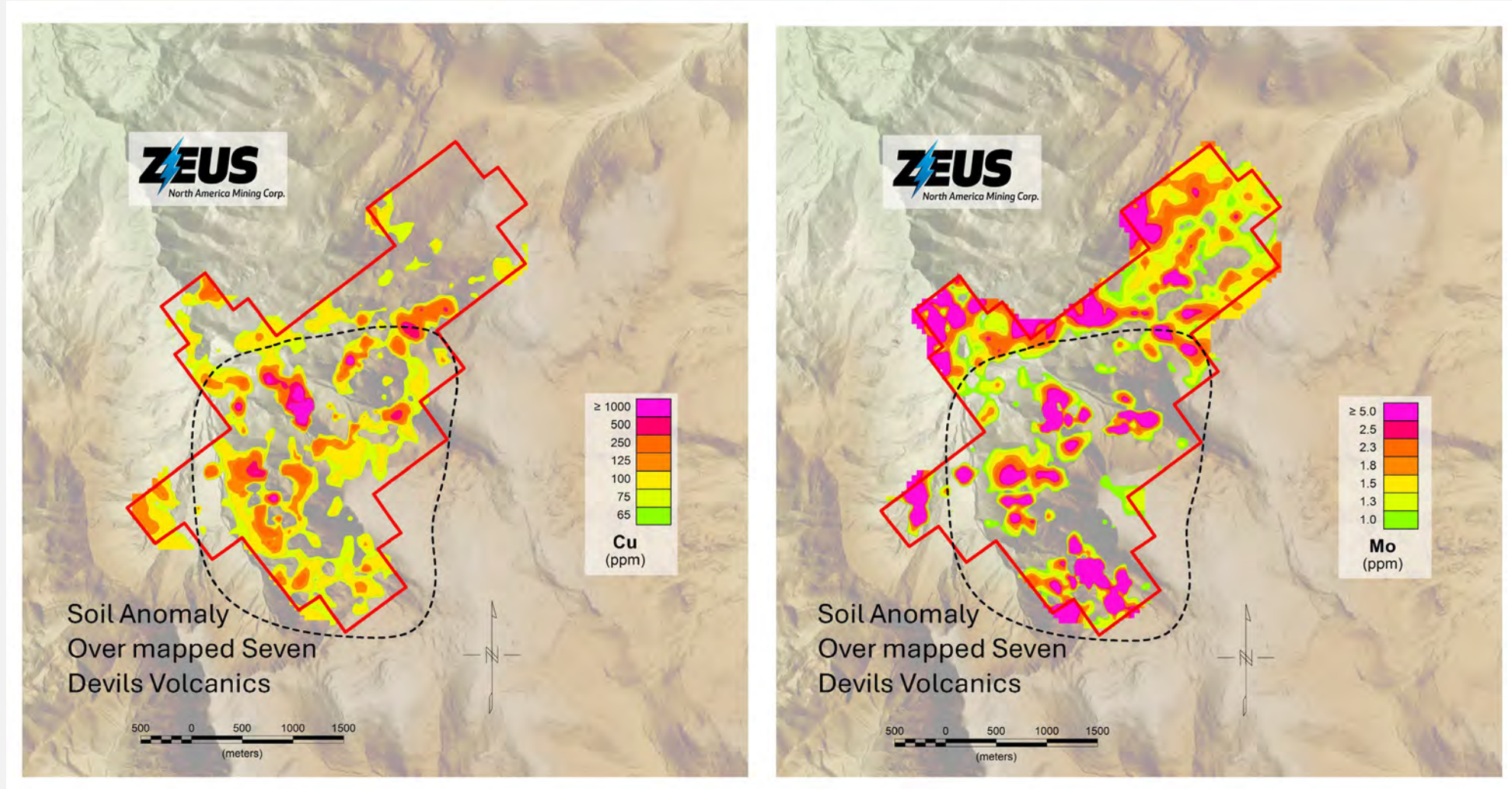
Malachite along a fault
zone in the overlying
volcanics



CUDDY MOUNTAIN 2024 EXPLORATION-SOIL SAMPLES

- Collected 799 property wide soil samples at approximately 75 m spacing.
- Soils delineate a broad 3 km by 3 km copper and molybdenum in soil circular anomaly underlain by the Seven Devils Volcanics (~741 acres).
- Cu-Mo anomaly is strongest over the mapped volcanic rocks (andesites and rhyodacites) near the valley floor - interpreted to be sub-cropping exposure of the Seven Devils Volcanics, which host the neighbouring Leviathan Porphyry Copper discovery.
- The newly identified copper-molybdenum soil anomaly contains individual soil **samples up to 0.38 percent (“%”) copper and 28.5 parts per million (“ppm”) molybdenum** (31 samples contain 212 ppm Cu or more; 5 samples contain percent level copper up to and including 0.38% Cu; 116 samples contain 2 ppm Mo or more; 6 samples contain more than 10 ppm Mo, with values up to and including 28.5 ppm Mo).
- Cuddy Mountain continues to show strong similarities to the Hercules discovery, with a comparable soil geochemical footprint.

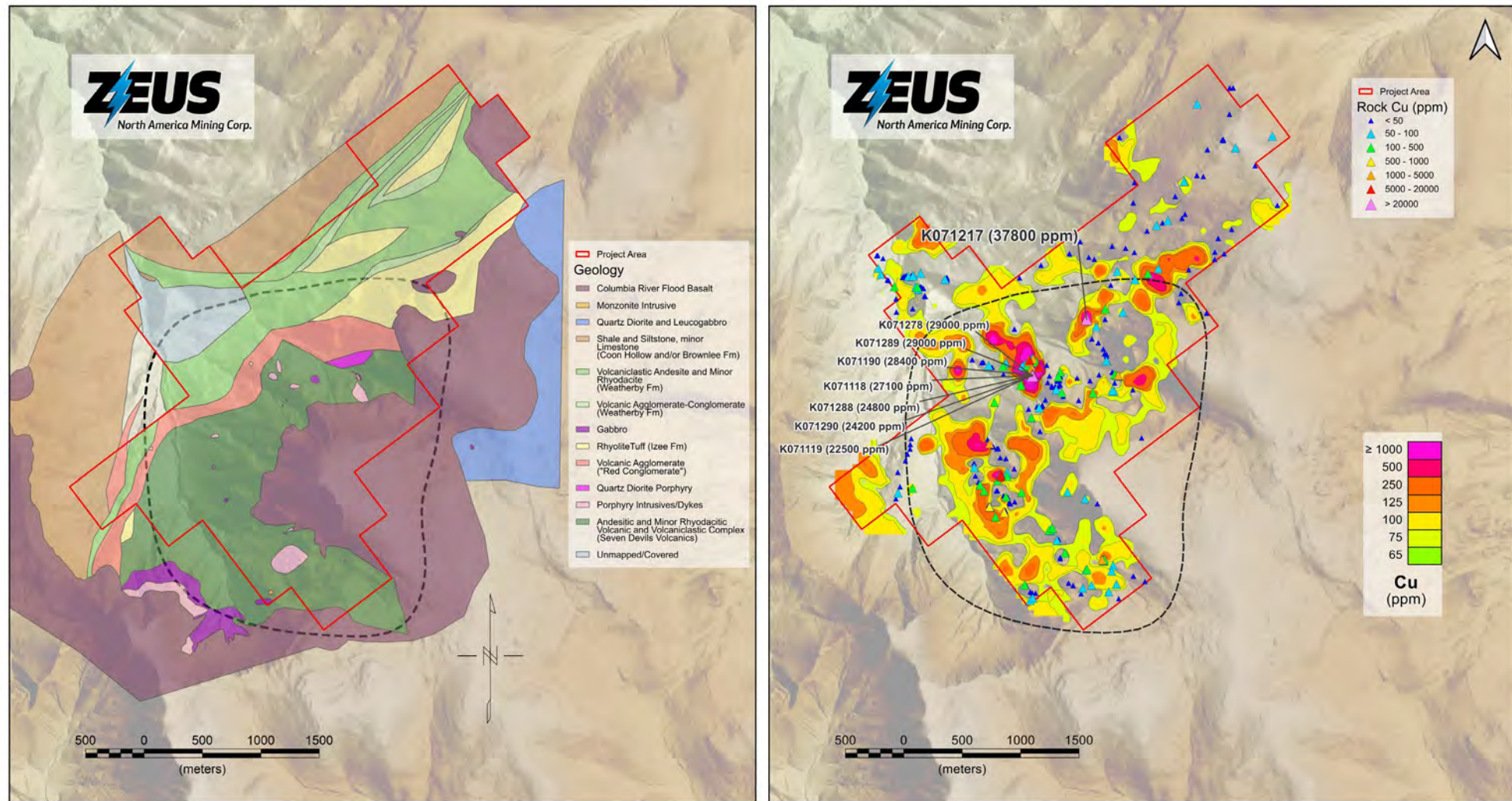
CUDDY MOUNTAIN 2024 EXPLORATION-SOIL SAMPLES



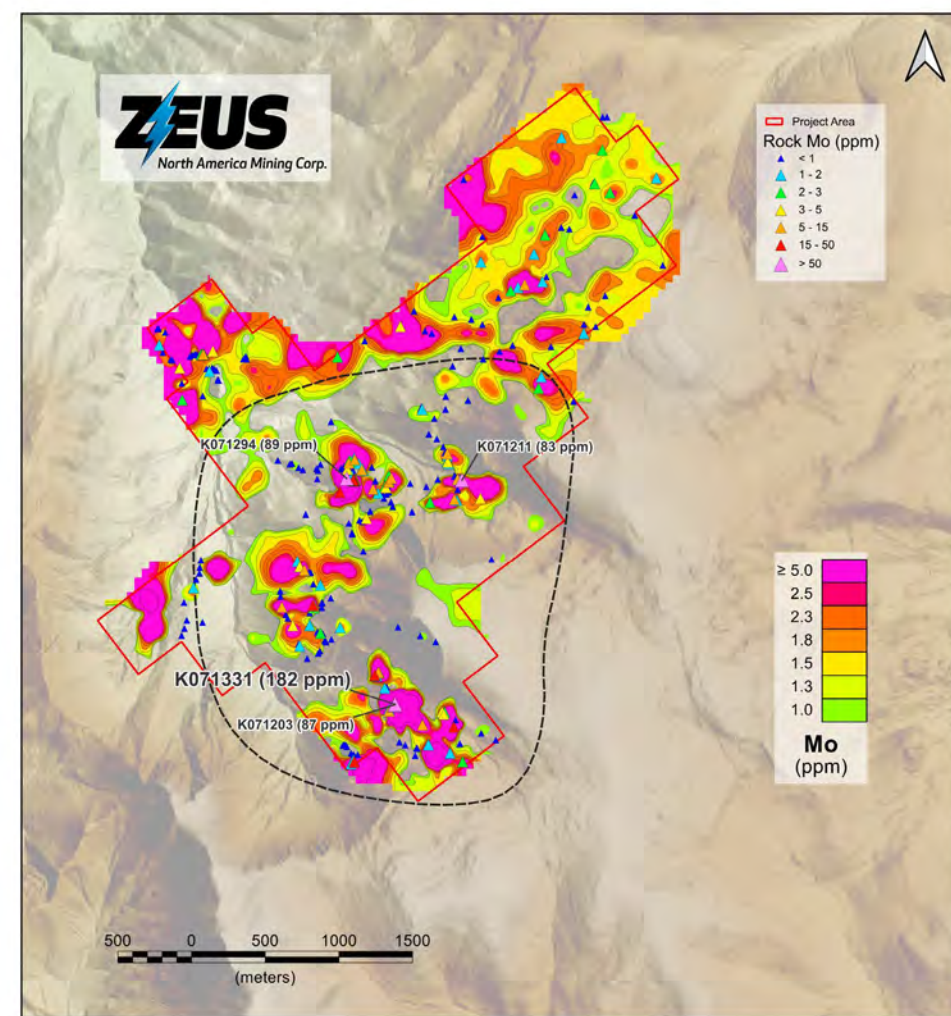
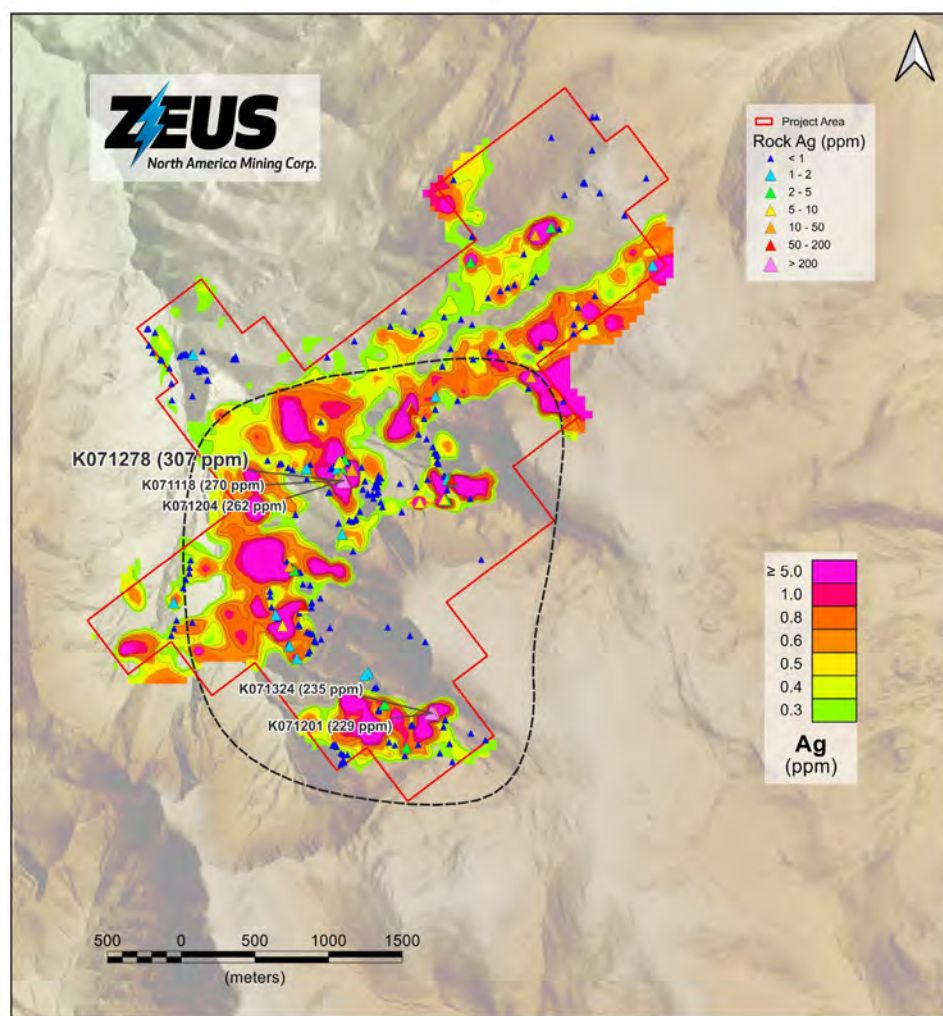
CUDDY MOUNTAIN 2024 EXPLORATION-ROCK SAMPLES

- Collected 339 property wide rock grab samples.
- Of the 339 rock grab **samples collected**:
 - 35 samples contain 0.1% Cu or more; 16 samples contain greater than 1.1 % Cu copper, up to and including 3.8% Cu;
 - 29 samples contain 10 g/t Ag or more; 9 samples contain more than 129 g/t Ag, with values up to and including 307 g/t Ag;
 - 26 samples contain 10 g/t Mo or more; 5 samples contain more than 40 g/t Mo, with values up to and including 182 g/t Mo (with 0.37g/t Au).

CUDDY MOUNTAIN 2024 EXPLORATION-ROCK SAMPLES



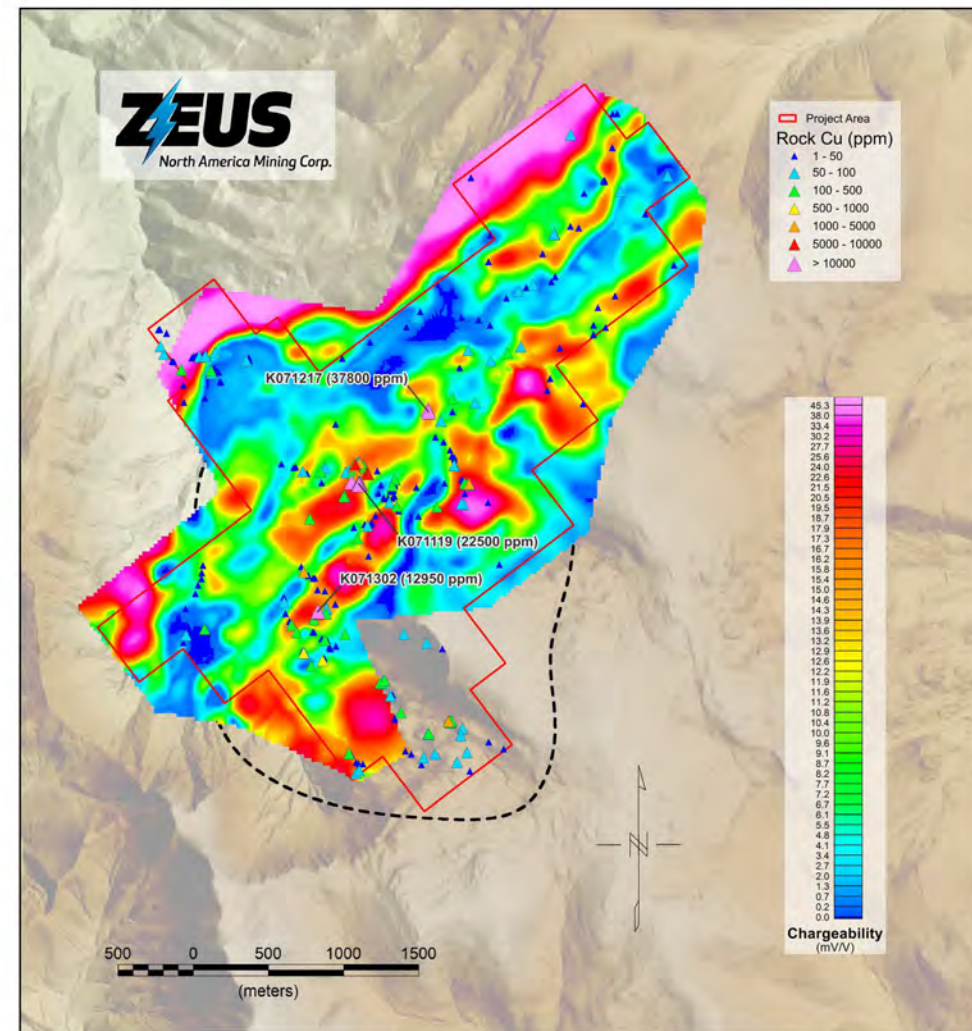
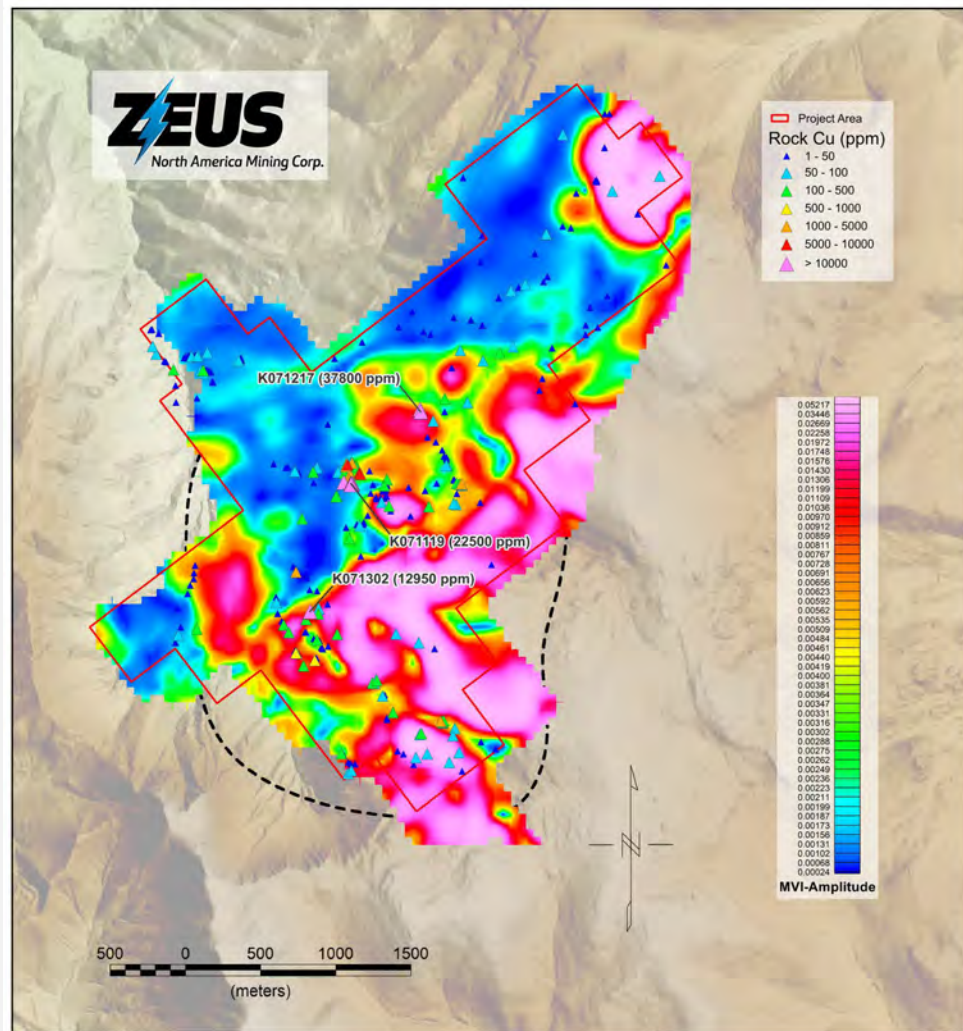
CUDDY MOUNTAIN 2024 EXPLORATION-ROCK SAMPLES



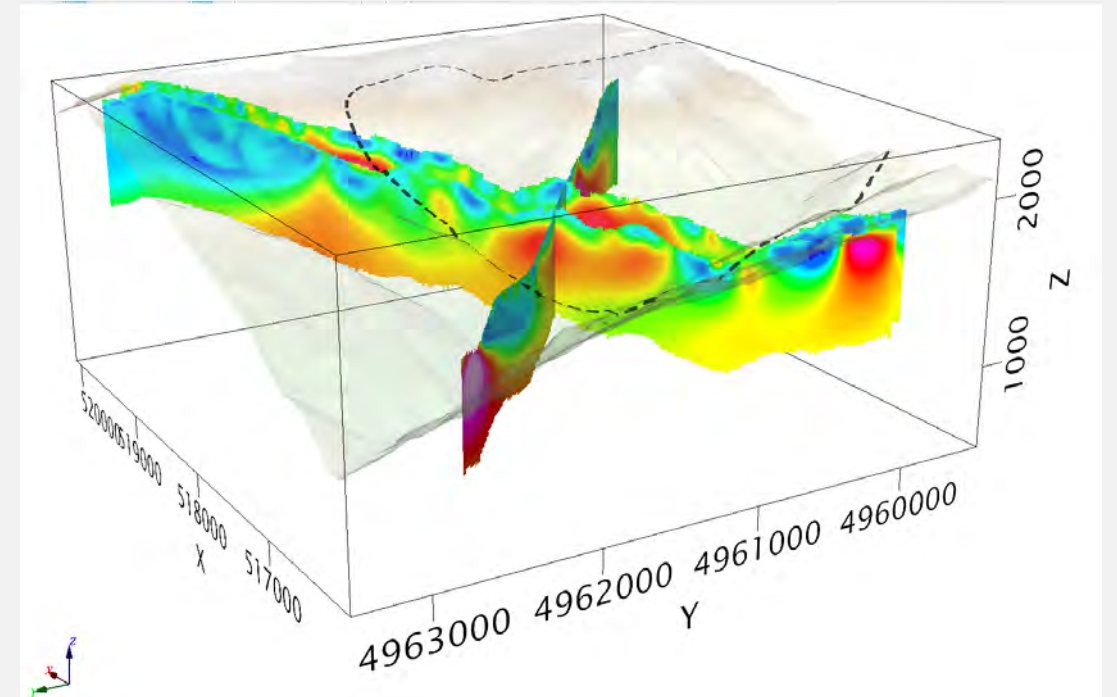
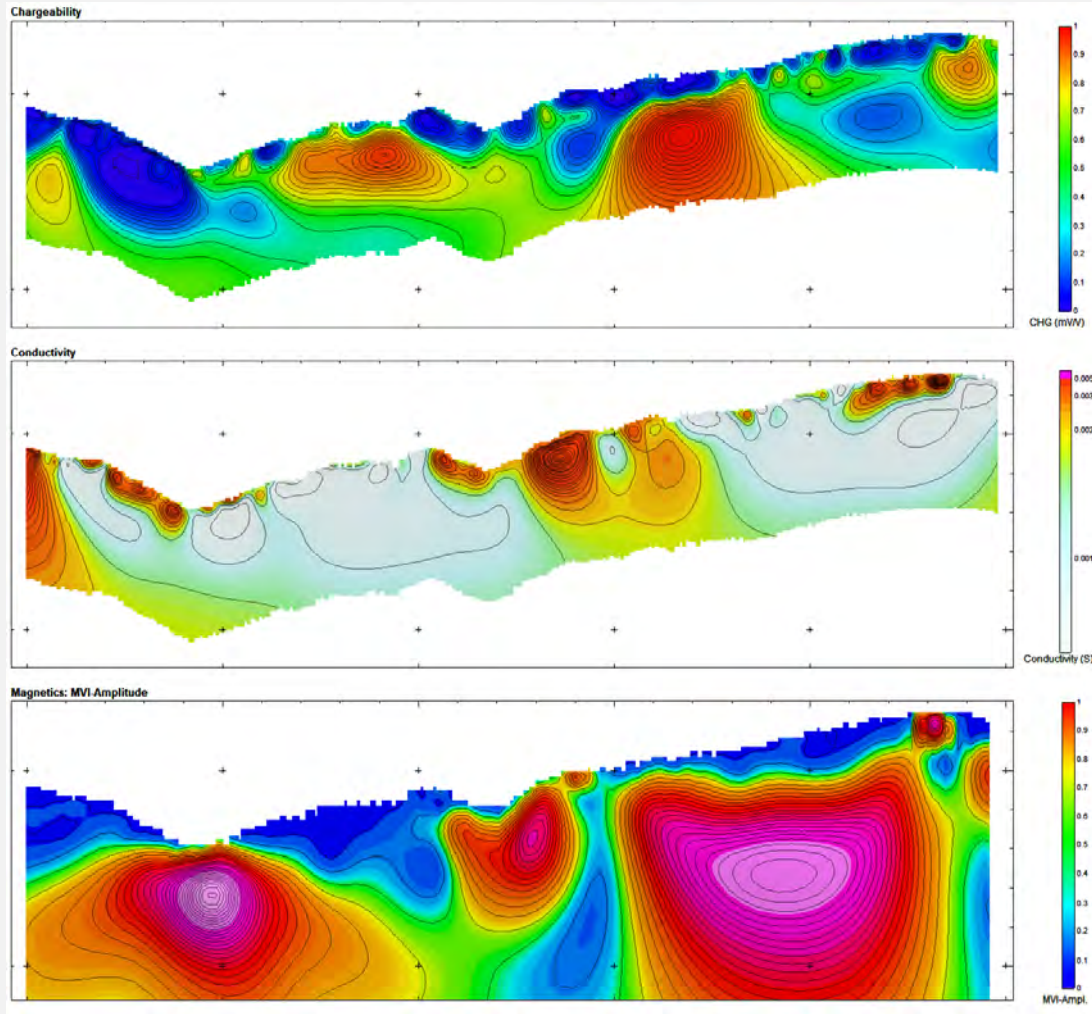
CUDDY MOUNTAIN 2024 EXPLORATION-GEOPHYSICS

- Completed property wide ground magnetics and 3D Induced Polarization (“IP”) geophysical surveys. **The results highlight the potential for both skarn and porphyry copper mineralization across the mapped prospective Sevin Devils Volcanics:**
 - Broad, continuous zones of moderate to strong chargeability, (>20ms up to 60ms) trending NE-SW, indicative of extensive sulphide mineralization potential;
 - Magnetic highs may indicate potassic core of a porphyry system or adjacent magnetic lows reflecting alteration halos;
 - Magnetic highs occurring adjacent to and beneath the chargeability feature highlight a prominent interface along the Columbia River Flood Basalts paralleling with the chargeable body. Integration of these overlapping geophysical signatures helps **outline the compelling exploration target for skarn and/or porphyry copper mineralization** within the Cuddy Mountain Property;
- The integration of these geophysical properties in conjunction with geological mapping, soil and rock geochemistry, and topography further define the high priority target improving the probability of discovery.

CUDDY MOUNTAIN 2024 EXPLORATION-GEOPHYSICS

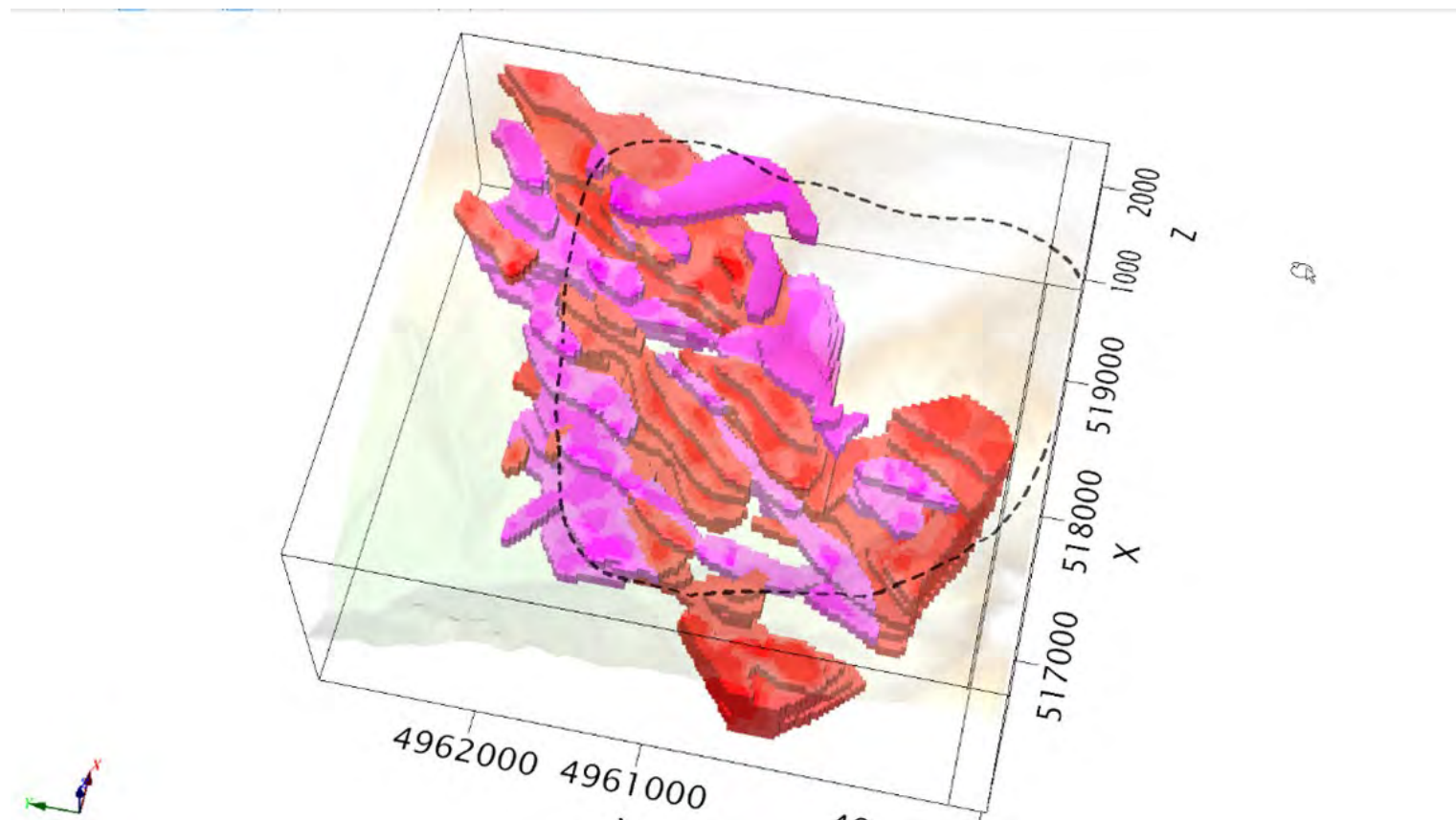


CUDDY MOUNTAIN 2024 EXPLORATION-GEOPHYSICS



Chargeability in Red and
Conductivity in Pink

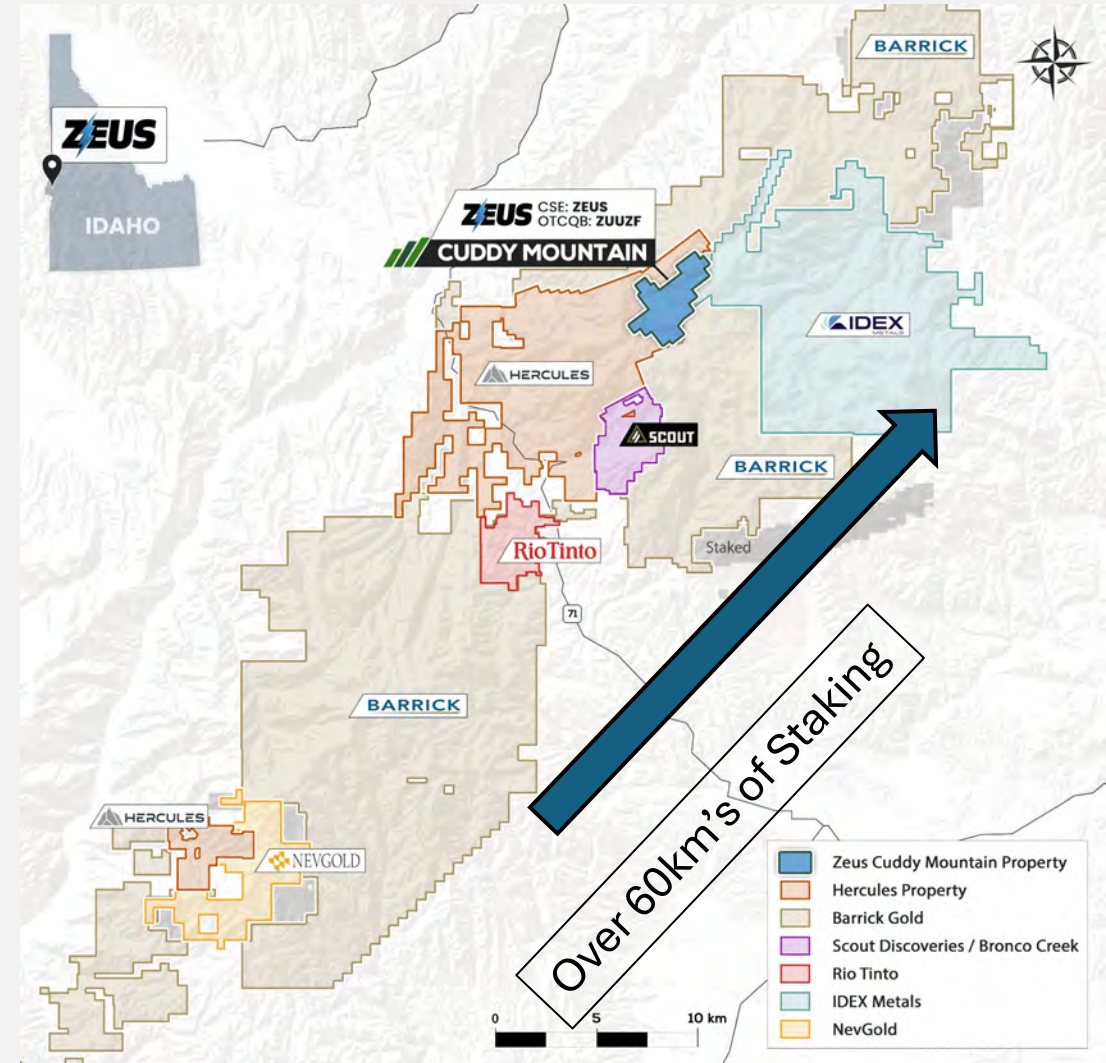
CUDDY MOUNTAIN 2024 EXPLORATION -GEOPHYSICS



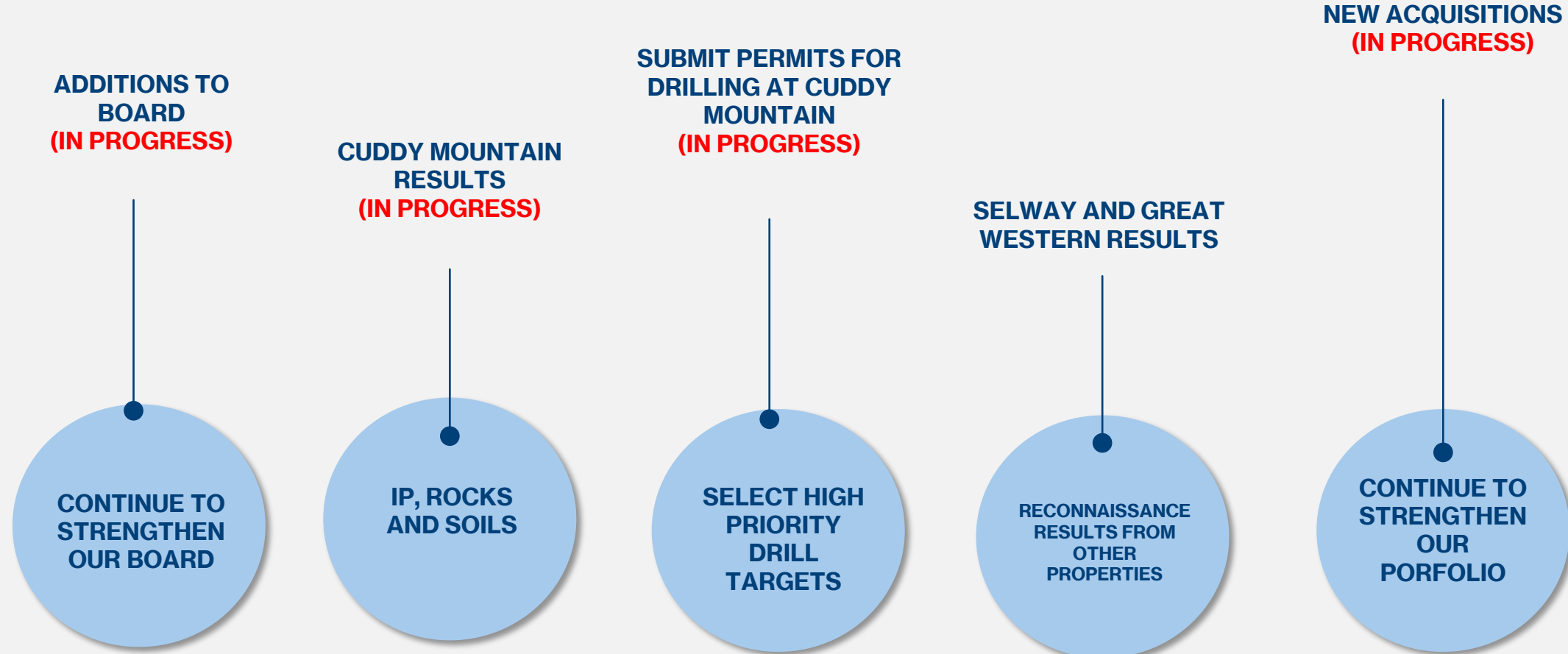
UNPRECEDENTED DISTRICT SCALE STAKING RUSH

- An unprecedented staking rush has occurred since Hercules Metals blind Cu-Ag-Mo porphyry discovery including **Barrick, RioTinto, Scout, NevGold, Hercules and more.**
- The Cuddy Mountain Property is immediately adjacent to Hercules Metals newly discovered Leviathan Copper Porphyry (\$190M MC).*
- Discovery by Hercules resulted in Barrick injecting \$23M in equity.
- 1000's of new claims have been staked demonstrating the potential district scale understanding of the discovery. Staking is still ongoing.
- The Cuddy Mountain Property consists of 101 lode mining claims respectively and cover a cumulative area of approximately 2000 acres.
- The Property has excellent infrastructure and road access.

• *Adjacent Property (www.herculesmetals.com)

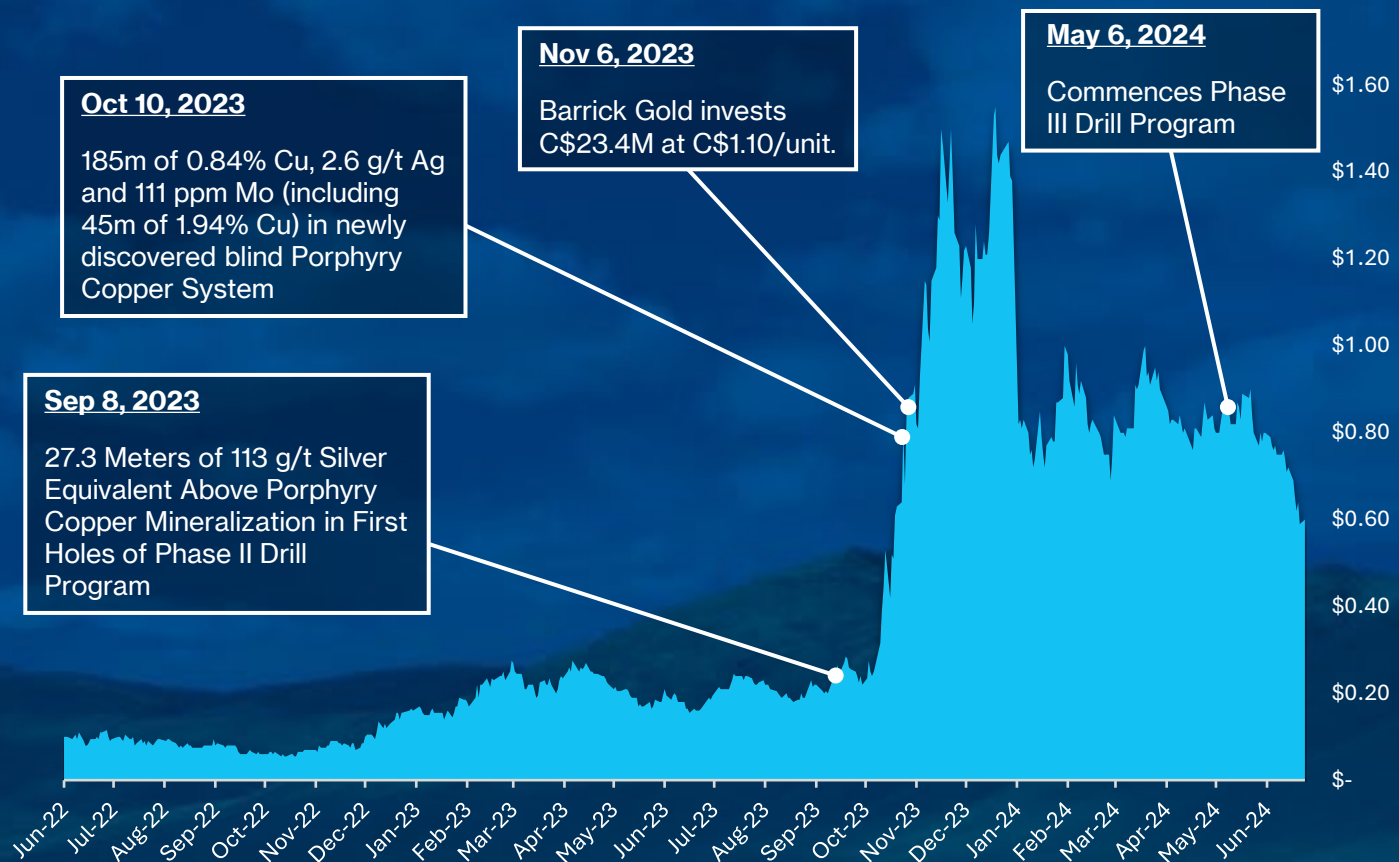


ZEUS – THE PATH FORWARD



Value Creation Opportunity – A BIG Example

Hercules Metals (TSXV: BIG): With good results from the first holes of the Phase II drill program, valuation dramatically increased with further drilling of the discovered porphyry copper system returning **> 10x return** for early investors*.



Value Creation Opportunity

- ✓ Strategically positioned within the heart of a newly discovered porphyry copper belt.
- ✓ Immediately on trend to the discovery, situated along a major structure (The Bayhorse thrust).
- ✓ Early discovery opportunity creates potential high torque investment.
- ✓ Majors staking in the immediate vicinity create lucrative takeout opportunities.

CORPORATE STRUCTURE*

65,463,298 Issued

25,844,080 Warrants (2,200,000 @0.06; 17,679,800 @ 0.15;
5,964,280 @ 0.35)

3,300,000 Options

Management and Insiders ~10%

94,607,378 Fully Diluted

*Completed a forward split March 4, 2024; Market Cap approx. \$17M



CONTACT

Zeus Mining Corp. Head Office

1100 - 1199 West Hastings Street,
Vancouver, BC V6E 3T5

 www.zeusminingcorp.com

 @ZeusMiningCorp

 @Zeus North America Mining Corp.

Investor Relations

Kin Communications Inc.

E: investors@zeusminingcorp.com

P: 604-684-6730

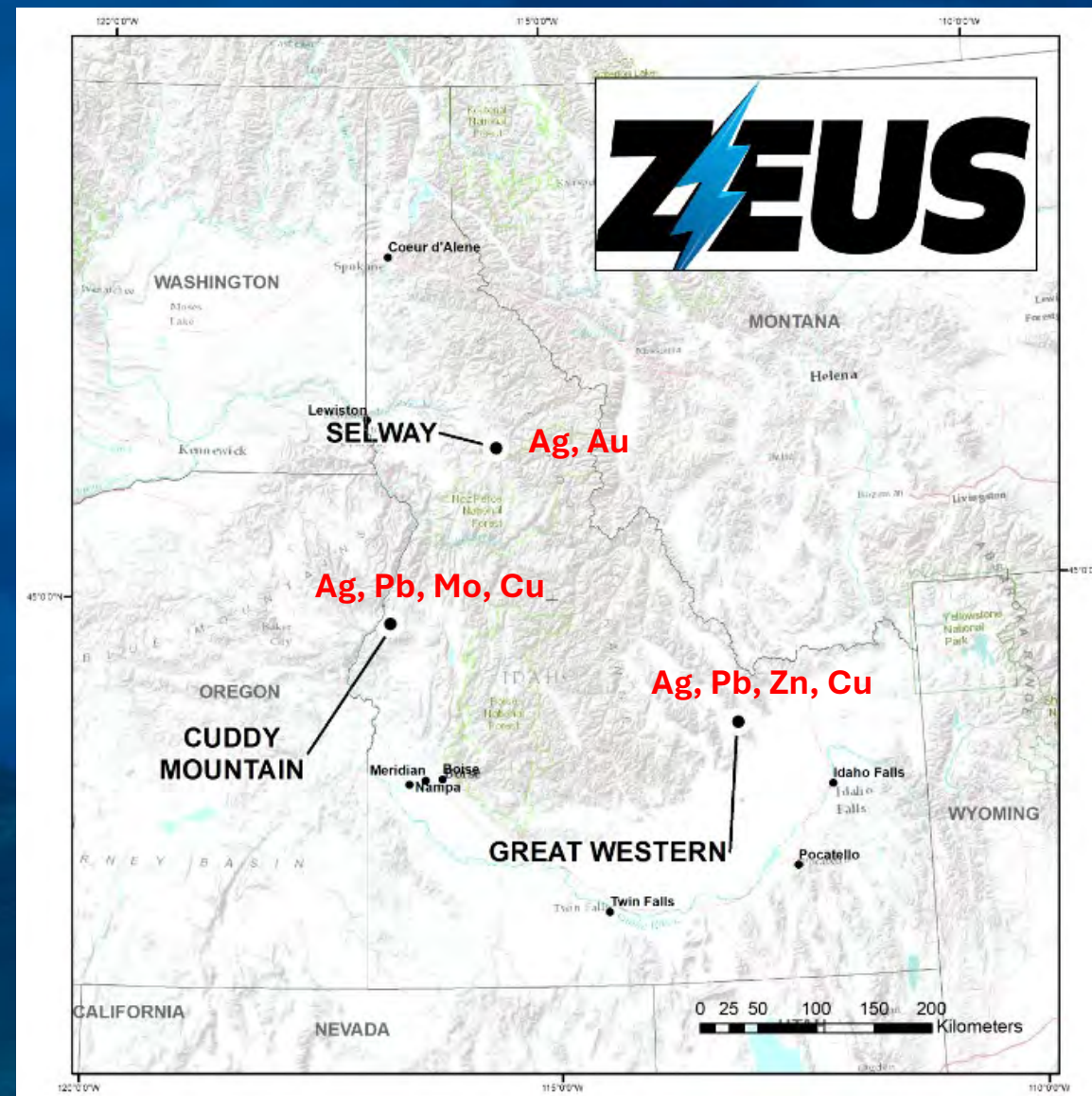


APPENDIX

IDAHO PORTFOLIO

- Properties consist of 102 (Cuddy Mountain), 57 (Selway) and 38 (Great Western) lode mining claims respectively covering an area of ~4,200 acres subject to a 2% NSR.
- The company plans to explore the properties for both precious and base metals.

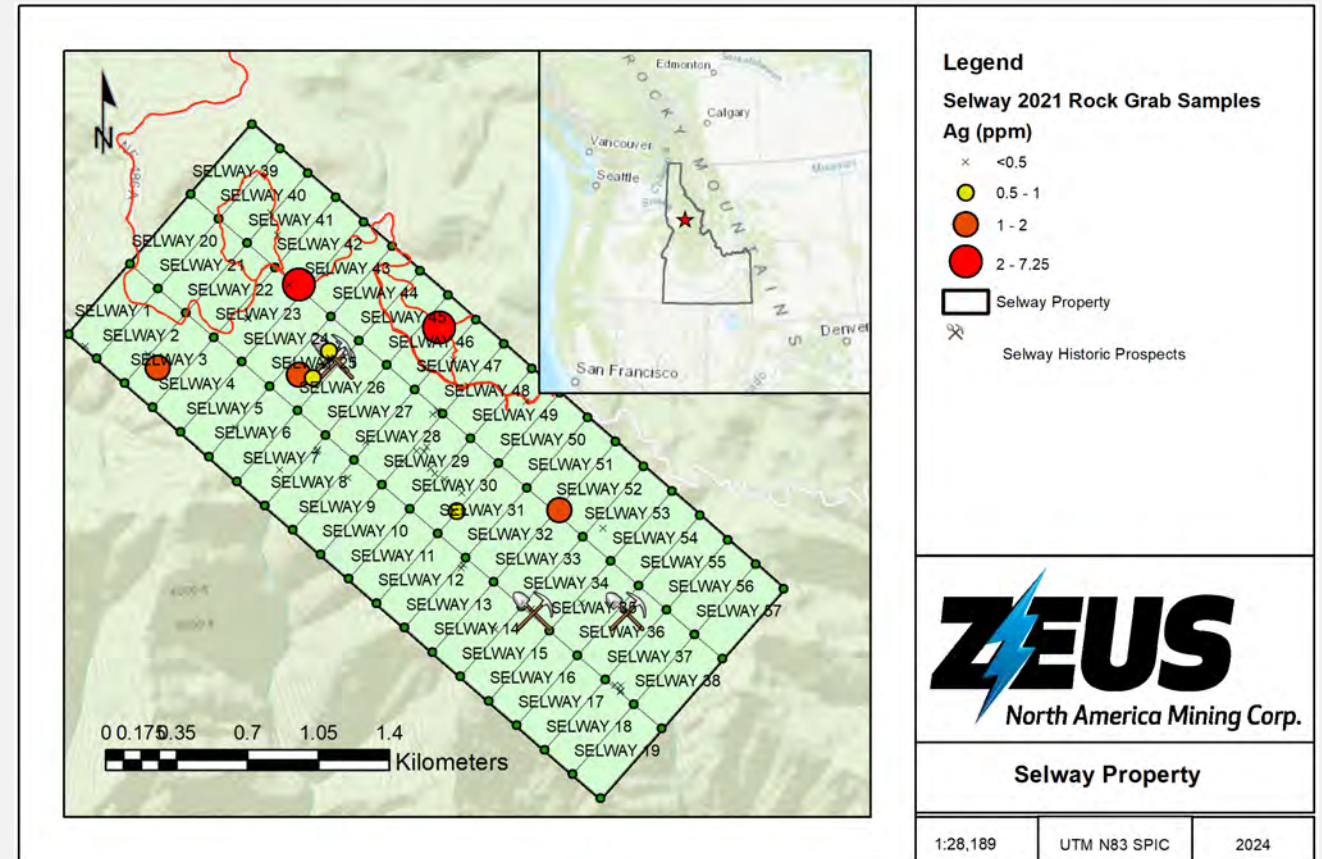
*Adjacent Property (www.herculemetals.com)



SELWAY PROPERTY HISTORIC WORK (GOLD/SILVER)*

- The primary exploration target at the Selway Property is an **intrusive-related Au-Ag (+/- base metal) vein deposit** underlain by a tonalitic orthogneiss and foliated granodiorite unit.
- Recent rock grab samples with collected by APEX Geoscience Ltd. in 2021 contain **1.37 g/t gold** and **7.25 g/t silver**.
- Historic grab samples from an old ore bin contain **53.6 oz/t silver** and **1.08 oz/t gold** (Gordon, 1973).

*All information is derived solely from management of Zeus Mining and otherwise publicly available third-party information which are believed to be reliable, but which have not been independently verified by the Company and as a result are not guaranteed as to accuracy and completeness.



GREAT WESTERN PROPERTY HISTORIC WORK (SILVER/COPPER)

- The primary exploration target at the Great Western Property is a **Carbonate Replacement Deposit**.
- A blind porphyry may be the source of the mineralization.
- Results for rock grab samples collected by APEX in 2021 in the area have 5 samples with up to **7300 g/t Ag**.
- Six rock grab samples returned grades from 0.61% Cu and up to **4.25% Cu**.
- A historical, non-compliant 43-101 resource of 4,900 indicated tons averaging **1.7 oz/t Ag, 3.6% Pb, and 0.5% Cu** (McHugh et al., 1991)*.

*Resource is non-43101 compliant, has not been verified by the company and is not being treated as current mineral resources or mineral reserves. This is presented simply as a record of previous exploration at the project and to show the geological prospectivity of the area.

